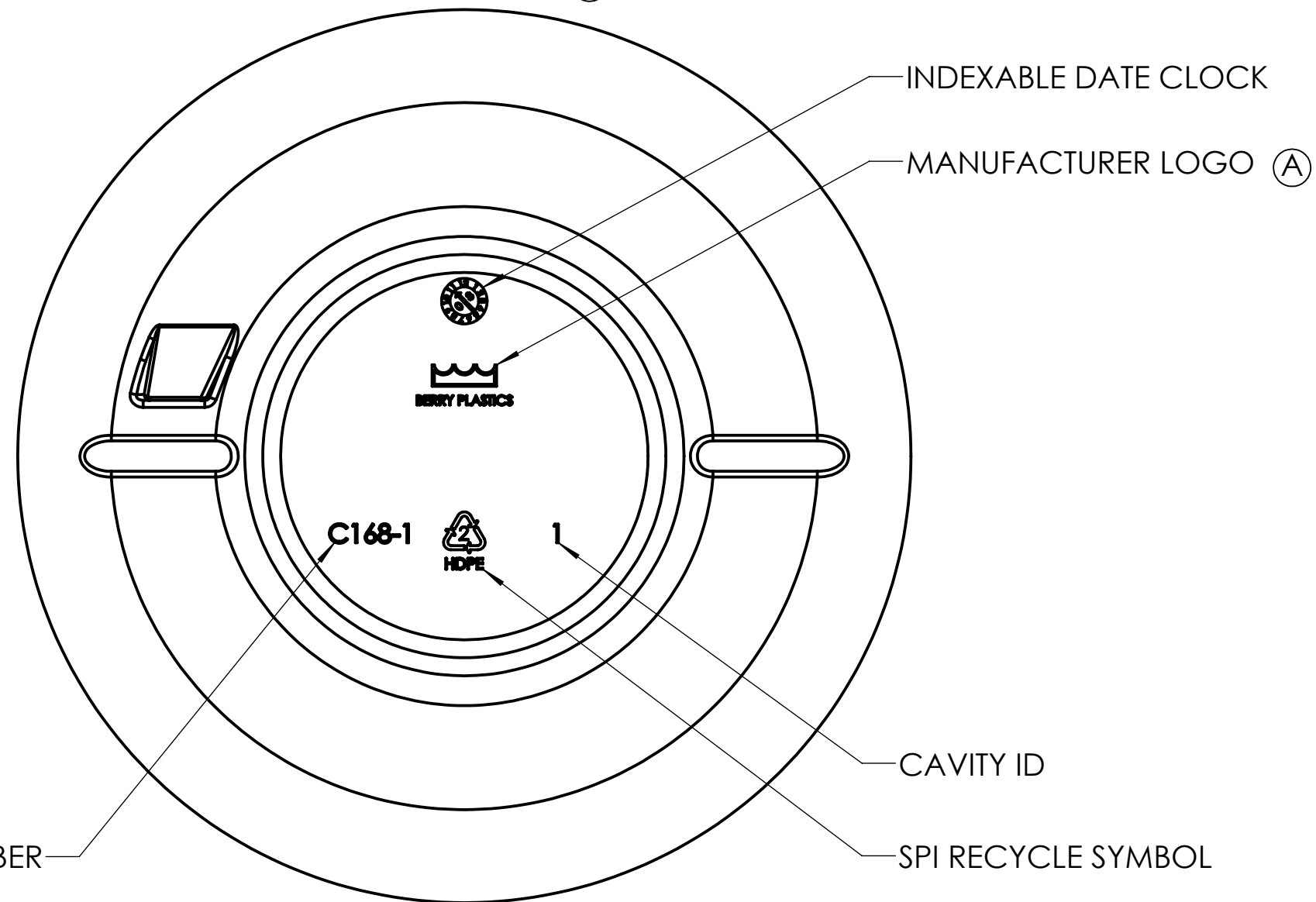
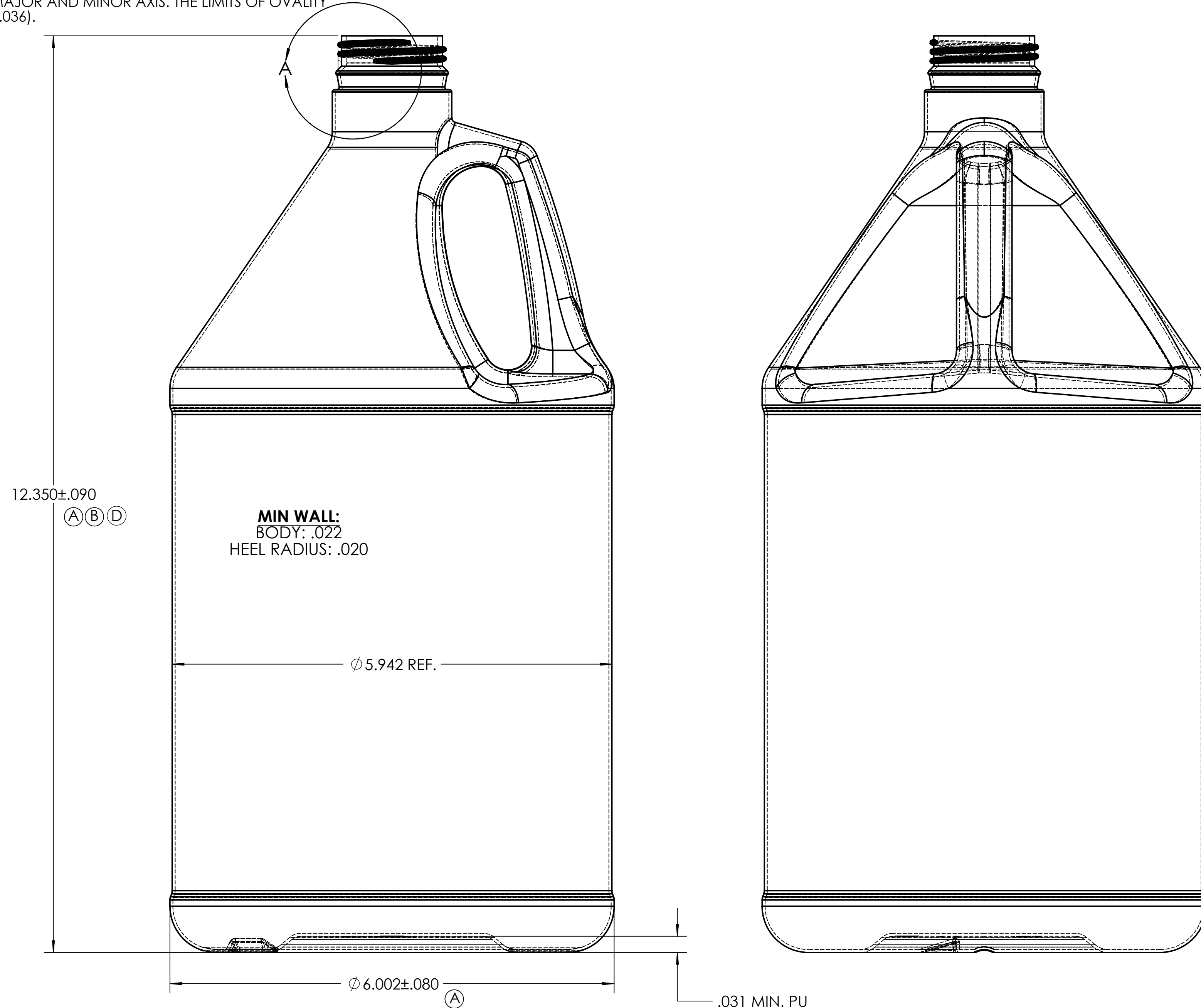
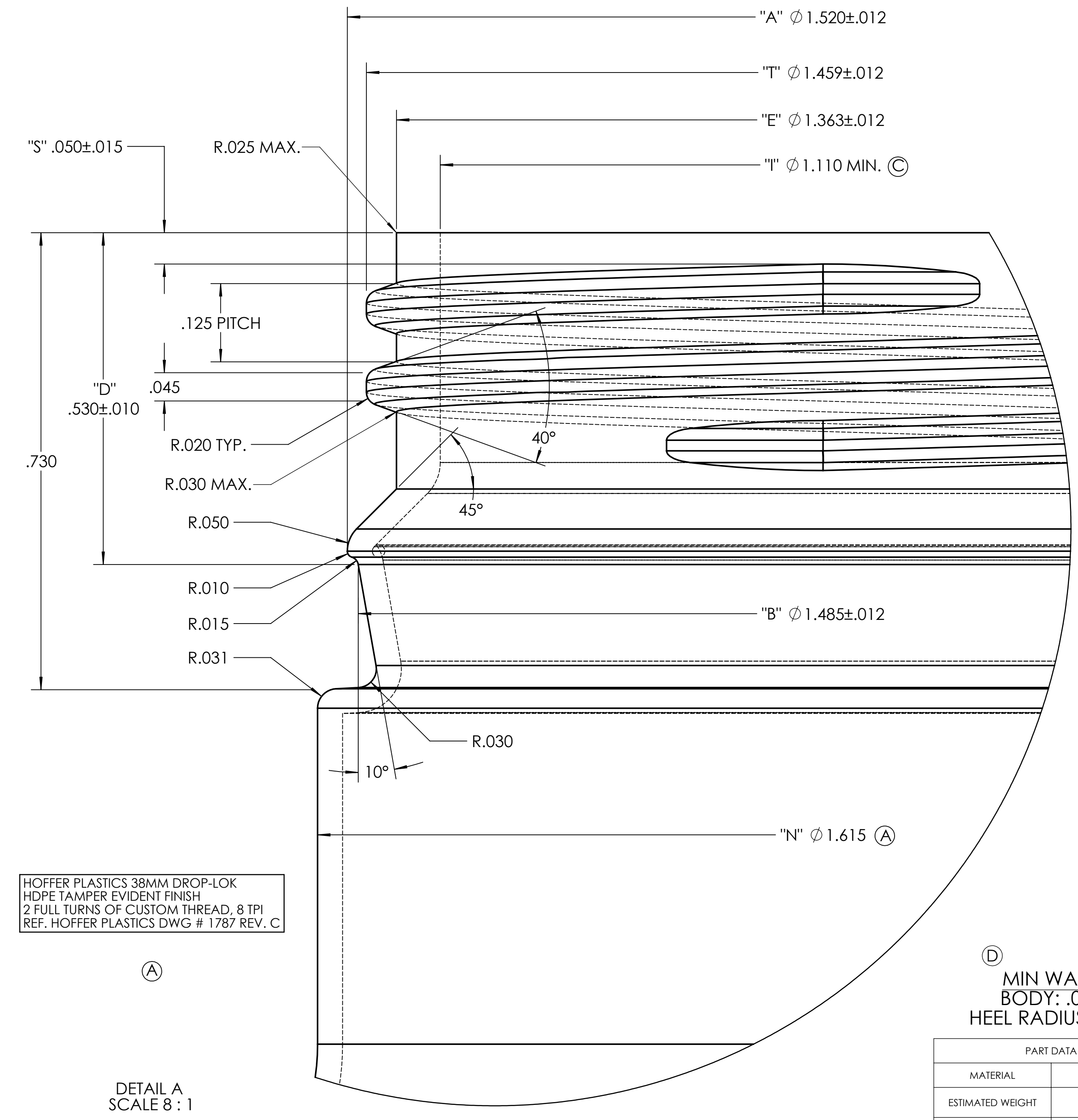


ALL NECK FINISH DIAMETER DIMENSIONS ARE THE AVERAGE OF TWO MEASUREMENTS TAKEN ACROSS THE MAJOR AND MINOR AXIS. THE LIMITS OF OVALITY ARE (.036).



LET	REVISION DESCRIPTION	BY	ECN #	DATE
A	HOFFER PLASTICS 38MM DROP-LOK FINISH WAS L38SP400; 3927mL OFC WAS 3860mL; 6.002 BOTTLE DIAMETER WAS 5.963; 5.942 REF. WAS Ø 5.903; Ø 1.615 "N" WAS Ø 1.558; 12.203 OVERALL BOTTLE HEIGHT WAS 11.946; REMOVED PPT LOGO FROM BASE & ADDED BERRY PLASTICS LOGO.	D.SILLETT		11/19/08
B	ADDED .187 TO OVERALL HEIGHT PER CUSTOMER REQUEST. 12.390 OVERALL BOTTLE HEIGHT WAS 12.203; 3932CC OFC WAS 3927mL.	D.SILLETT		11/24/08
C	ADDED 1.110 MIN. "I" Ø PER CUSTOMER REQUEST.	D.SILLETT		12/11/08
D	12.350 WAS 12.390; ADDED MIN. WALL NOTES.	R.LIKA		1/20/2010



HOFFER PLASTICS 38MM DROP-LOK
HDPE TAMPER EVIDENT FINISH
2 FULL TURNS OF CUSTOM THREAD, 8 TPI
REF. HOFFER PLASTICS DWG # 1787 REV. C

DETAIL A
SCALE 8 : 1

(D) MIN WALL:
BODY: .022
HEEL RADIUS: .020

PART DATA	
MATERIAL	HDPE
ESTIMATED WEIGHT	130 GMS. ±6 GMS.
OVERFLOW CAPACITY	(A) (B) 3932 CC ±44 CC
NECK FINISH	(A) 38MM DROP-LOK

→ .XXX → (.XXX) → .XXX →
ARE BASIC DIMENSIONS ARE REFERENCE DIMENSIONS ARE INSPECTION DIMENSIONS

THIS IS A PRELIMINARY PRODUCT DRAWING. SPECIFICATIONS ARE SUBJECT TO CHANGE (IN DEVELOPMENT).

TOLERANCE UNLESS SPECIFIED
xxx +/- .031
xx +/- .063
x +/- .094
Fractional +/- 1/8"
Angles +/- 1/2°

BERRY
PLASTICS CORPORATION
LEADERSHIP BY DESIGN
101 OAKLEY STREET
EVANSVILLE,
INDIANA 47706
TEL. (812) 424-2904

CONFIDENTIAL	
PRODUCT NAME:	B38RD1HA
DESCRIPTION:	1 GALLON CUSTOM HANDLEWARE
FILE NAME:	CP-100036-PRTO1
PROJECT #:	100036
CREATED BY:	D.SILLETT
CREATION DATE:	11/05/08
SHEET:	1 of 1
DRAWING VERSION:	D
SCALE:	1:1
SHEET SIZE:	D

TOOL #: C169-1
WORKS WITH: C168-1