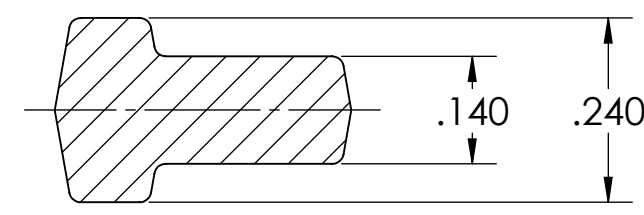
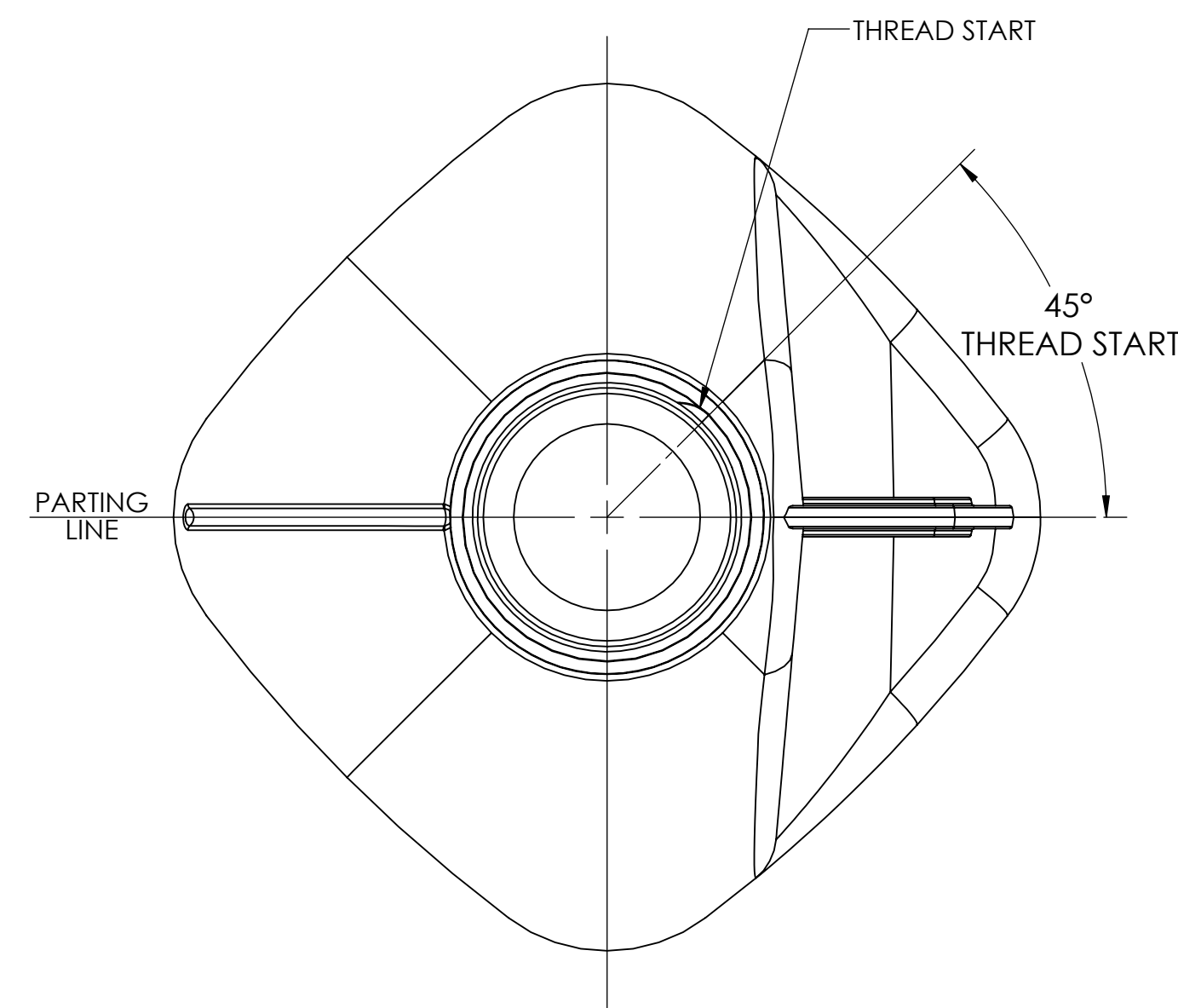
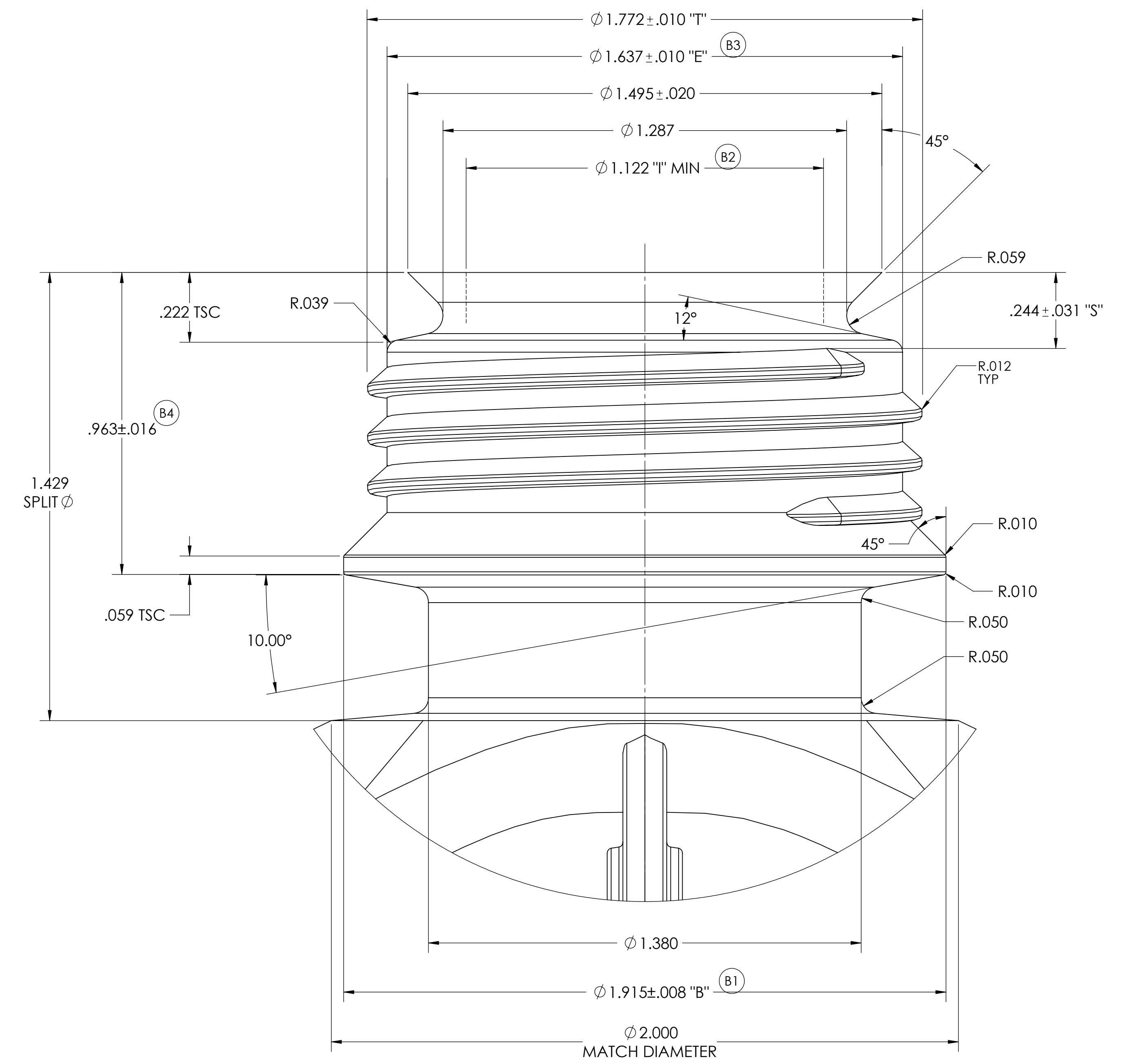
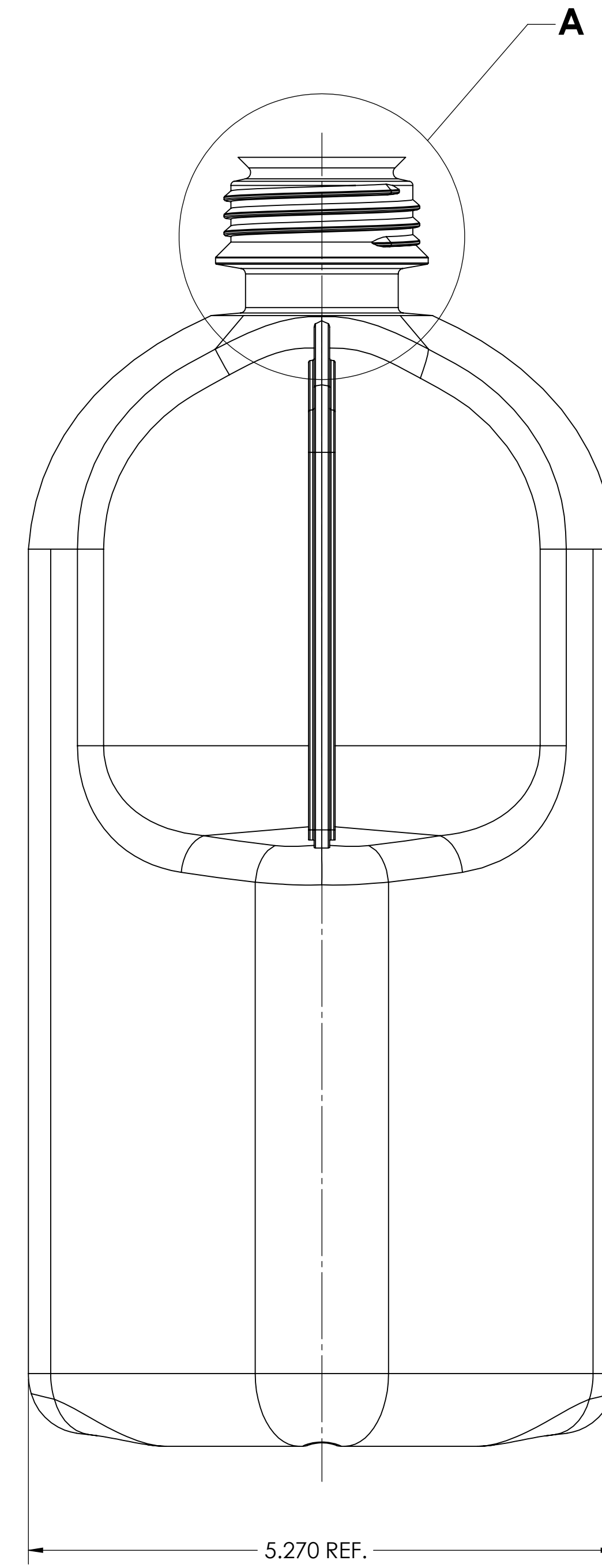
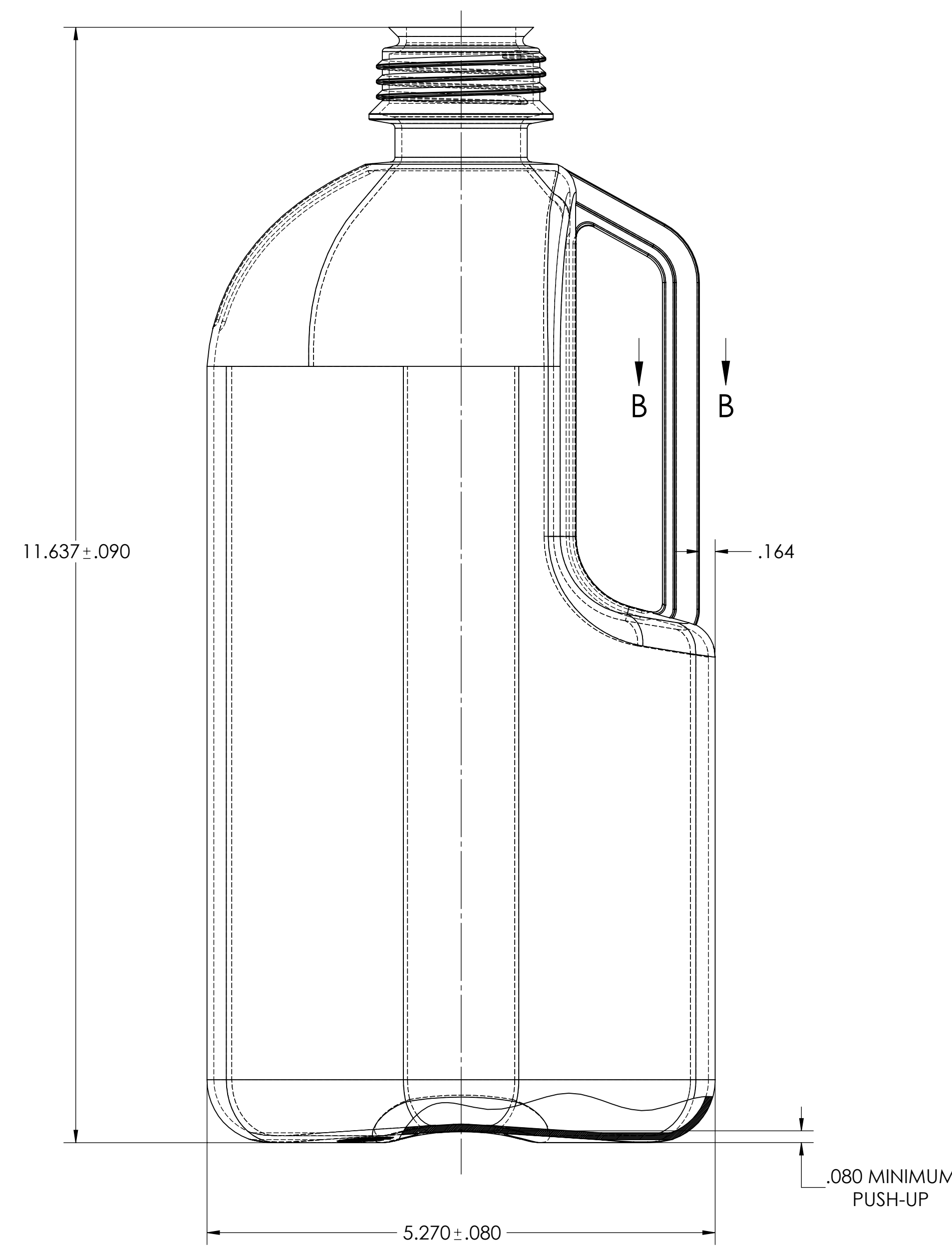
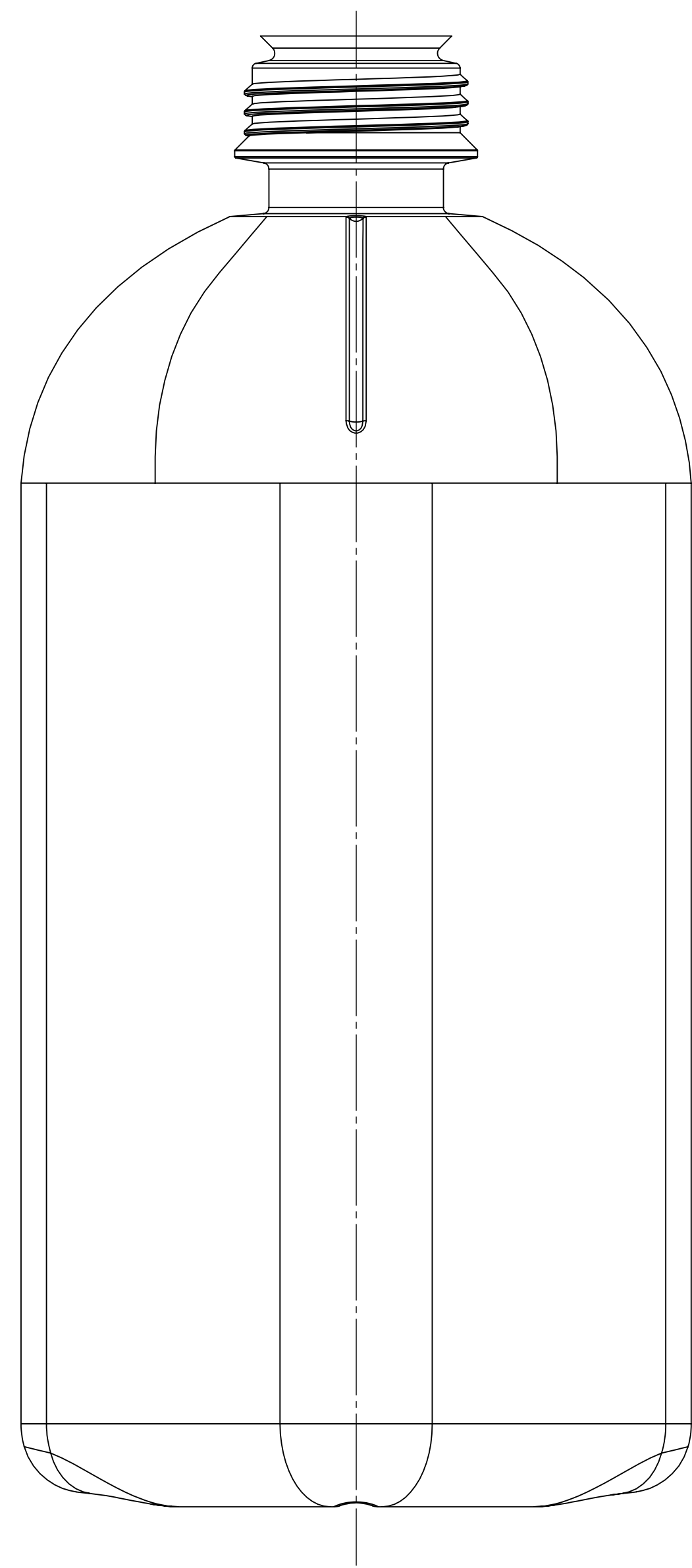


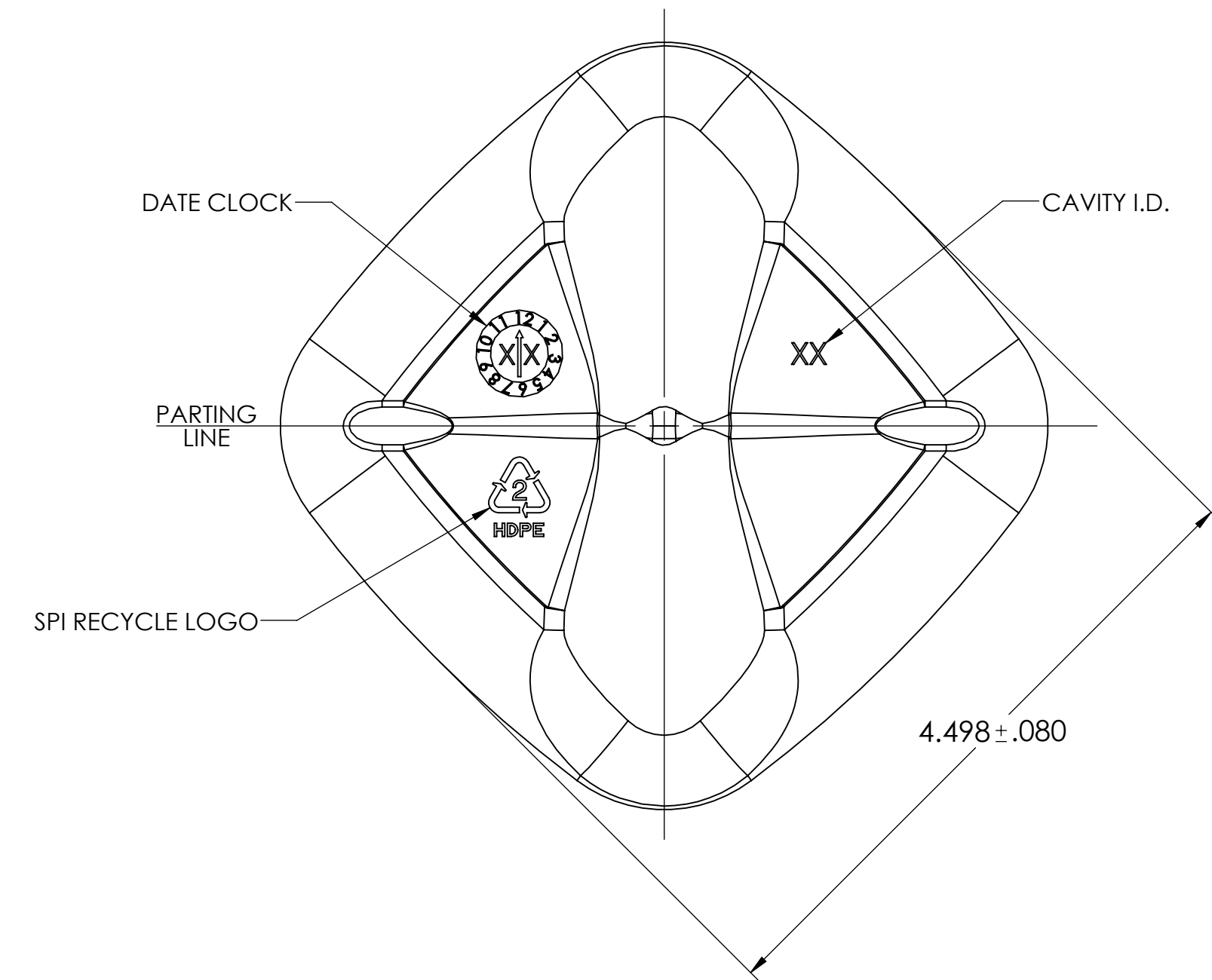
- NOTES:
1. INTERPRET DRAWING TO ASME Y14.5M - 1994
  2. DO NOT SCALE DRAWING
  3. ALL NECK FINISH DIAMETER DIMENSIONS ARE THE AVERAGE OF TWO MEASUREMENTS TAKEN ACROSS THE MAJOR AND MINOR AXIS. THE LIMITS OF OVALITY ARE (.036").
  4. THREAD SPEC = SINGLE LEAD, 4 MM (.1575") PITCH, 3 REVOLUTIONS.
  5. MINIMUM WALL THICKNESS - PANEL = .038"
  6. MINIMUM WALL THICKNESS - HEEL = .032"
  7. MINIMUM TAIL SCAR = .075"
  8. TOP FLATNESS ON SEALING SURFACE MAX. = .015



SECTION B-B  
SCALE 4 : 1



DETAIL A  
SCALE 4 : 1



**NOTE:**

THE 2D & 3D GEOMETRY ASSOCIATED WITH THIS DRAWING ARE ONLY A REPRESENTATION OF THE CUSTOMER'S DRAWING AND MOLDS - WHICH HAVE BEEN DIGITIZED TO MAKE NEW MOLDS.

IN NO WAY SHOULD THE 3D FILE ASSOCIATED WITH THIS DRAWING EVER BE SENT TO A MOLD VENDOR TO CUT STEEL, AS IT MAY DIFFER FROM THE ACTUAL EXISTING MOLD GEOMETRY.

**MOLD #9149**

REFERENCES:  
#D08-046-RevB  
CP-120325-PR101-RevD

TOLERANCE UNLESS SPECIFIED	xxx ±.031	xx ±.063	x ±.094	Fractional ±.158"	Angles ±.12°
<p><b>Berry</b></p> <p>101 OAKLEY STREET EVANSVILLE INDIANA 47706 TEL (812) 424-2904</p>					
<p><b>ZB45HD2500H</b></p> <p>2.5L (45mm Neck) Industrial Square Handeware - PurePak</p>					
<p>CP-120325-PR103</p>					
<p>Don Ankrney 2/16/2022</p>					
<p>1 of 1</p>					
<p>SCALE 1:1</p>					

PART DATA	
MATERIAL	PPG RESIN - NATURAL
ESTIMATED WEIGHT	208.0gr ±8.0gr
OVERFLOW CAPACITY	2415.0ml ±30.0ml
NECK FINISH	45mm Special Neck
MAXIMUM SLANT (W Ø .90", 180° ±20")	.030"